

**METROPOLITAN TRANSPORT
CORPORATION (CHENNAI) LIMITED
CHENNAI – 600 002.**

(A GOVERNMENT OF TAMILNADU UNDERTAKING)

MANUAL UNDER RIGHT TO INFORMATION ACT – 2005

INDEX

Sl. No.	Details of Information	Page Number
1.	Introduction	1
2.	Designation of Public Information Officer/ Assistant Public Information Officer/ Appellate Authority.	2
3.	Procedure and fee structure.	3
4.	Organisation details and departments.	4
5.	Officers /Branches with Phone number Details	7
6.	General information on area of operation, different types of routes.	11
7.	Student concession tickets, Monthly season tickets, Travel as you please ticket.	12
8.	Chartered trip, hiring of buses and luggage fare.	13
9.	Classification of routes.	15
10.	Details of Night services.	56
11.	Issue of Free passes to Physically Handicapped, Mentally Retarded, Blind, Freedom Fighters.	57
12.	Public Complaints, Lost property details.	59
13.	Buses to private parties on hire basis.	60
14.	Free passes to students up to 12 th Standard.	61
15.	Accident Branch details	62

INTRODUCTION

In order to promote transparency and accountability in the working of every Public Authority and to empower the citizens to secure access to information under the control of each public authority, the Government of India have enacted “The Right to Information Act 2005”, (RTI ACT) which came into force on 15.06.2005. In accordance with the provisions of section 4(1) (b) of this Act, the Metropolitan Transport Corporation (Chennai) Limited has brought out this Manual for information and guidance of the general public.

The purpose of this manual is to inform the general public about this department’s organizational set up, functions and duties of its officers, records and documents available with the department.

A person requiring any information under the Act may contact Thiru. M.Chandrasekhar, Company Secretary, Metropolitan Transport Corporation (Chennai) Limited, Chennai – 600 002, who has been designated as Public Information Officer. His office telephone No: is 2345 5801 Extn.234

Details of Designation of Public Information Officer

Public Information Officer:

1. Thiru. M.Chandrasekhar, B.Com., A.C.S.
Company Secretary,
Metropolitan Transport Corporation (Chennai) Limited,
Pallavan House, Annasalai,
Chennai – 600 002,
Ph: (044) 2345 5801 Extn.234.

Asst. Public Information Officer

1. Thiru.K.S.Shanmugam, M.A. (Soc.), M.A. (Tamil) PGDTA.,
Assistant Manager (Public Relations)
Metropolitan Transport Corporation (Chennai) Limited,
Pallavan House, Annasalai,
Chennai – 600 002,
Ph: (044) 2345 5866
2345 5801 Extn.236

Appellate Authority

1. Thiru. R.Balasubramanian, B.E.,M.B.A., M.C.A.,
Managing Director,
Metropolitan Transport Corporation (Chennai) Limited,
Pallavan House, Annasalai,
Chennai – 600 002,
Ph: Personal : (044) 2345 5833
Office : 2345 5801 Extn.222

The Procedure and Fee structure for getting information are as under.

- a) A request for obtaining information shall be made in writing or through electronic means either in person or by post to the Public Information Officer and must be accompanied by an application fee of Rs.50/- by cash or by means of Demand Draft.
- b) For providing information the request shall be made as at (a) above and the fee as below should be paid by Cash or Demand Draft .
 - I. Rs.2/- for each page (in A4 or A3 size paper) created or copied.
 - II. Actual charge or cost price of a copy in larger size paper.
 - III. Actual cost or price for samples or models
 - IV. For inspection of records, no fee for the first one hour and a fee of Rs.5/- for each 15 minutes (or fraction thereof) thereafter.
 - V. For Information provided in Diskette or floppy at the rate of Rs.50/- per Diskette or Floppy.
 - VI. For information provided in printed form at the price fixed for each Publication.

The Public Information Officer shall credit / remit the amount as prescribed by the Accounts Department.

PARTICULARS OF ORGANIZATION, FUNCTION AND DUTIES:

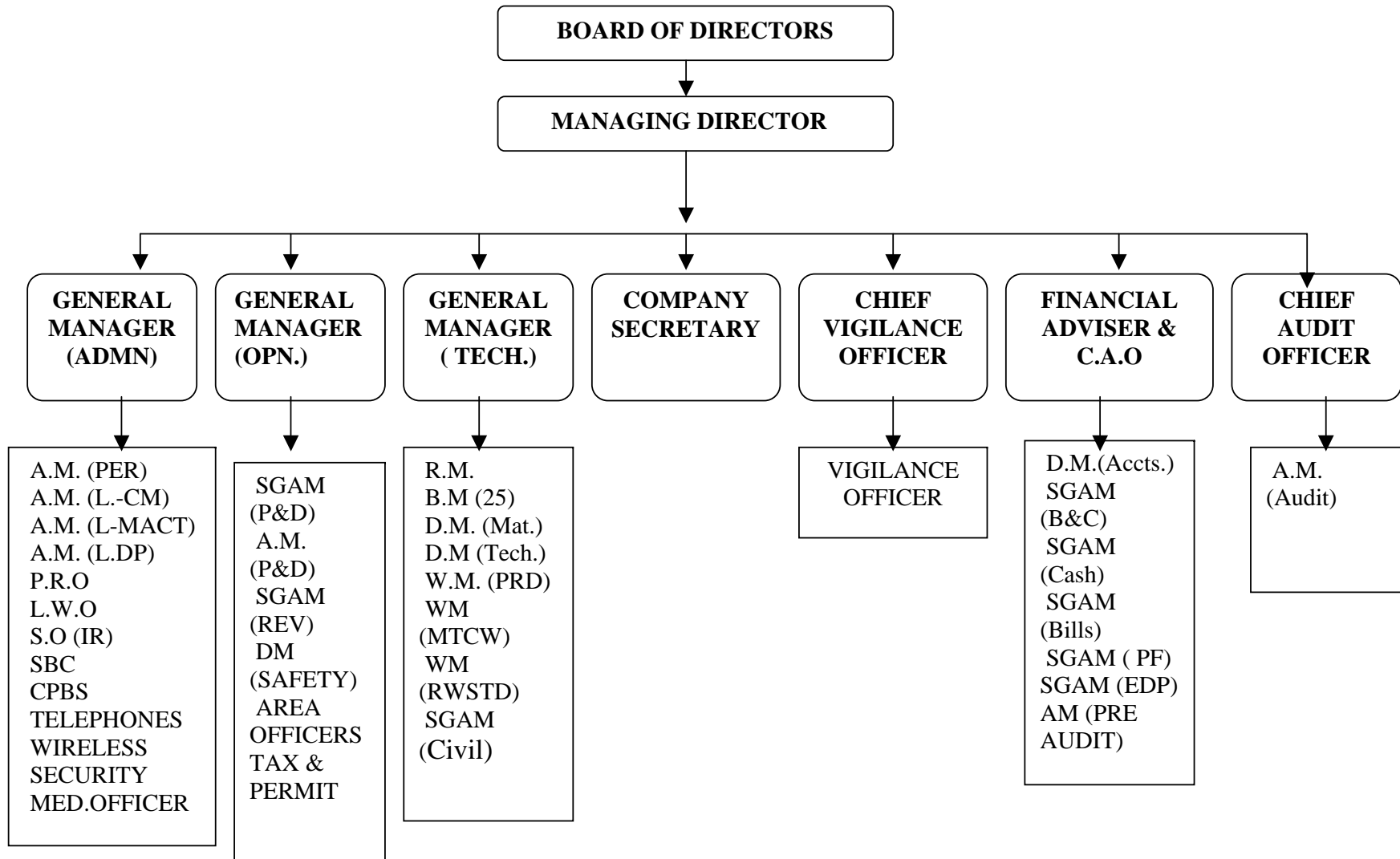
BRIEF HISTORY:

The erstwhile Pallavan Transport Corporation Limited was formed in 1972 by taking over the business of Bus operation from the Government. In 1994 Pallavan Transport Corporation Ltd., was bifurcated as Pallavan Transport Corporation Ltd., and Dr. Ambedkar Transport Corporation Ltd. In 1997 it was renamed as Metropolitan Transport Corporation – I Ltd., and Metropolitan Transport Corporation – II Ltd. respectively. Again in 2001, the Metropolitan Transport Corporation – II Ltd. was merged with the Metropolitan Transport Corporation – I Ltd., and the Resultant Corporation renamed as Metropolitan Transport Corporation (Chennai) Limited. At present MTC is providing transport facilities to the public of Chennai Metro.

OBJECTIVE / PURPOSE OF THE DEPARTMENT

Operation of bus services and providing efficient bus facilities to the travelling public in Chennai Metropolitan and sub urban areas.

ORGANISATION CHART



DEPARTMENTS

ADMINISTRATION DEPARTMENT

This wing is headed by one General Manager (Administration). The Departments mentioned above are under his control. This department deals with the recruitment in respect of various categories, following the rule of reservation, establishment matters, implementation of the policy decisions, implementation of government orders, Service details, pay control etc. of the employees. Public relation activities, issue of free passes, lost property matters, Labour welfare matters.

OPERATION WING

This wing is headed by one General Manager (Operation), the departments mentioned above are under his control. This department deals with the operation of bus services, maintaining fare tables, Time schedule, curtailment / augmentation, deviation of services, attending to the grievances of the travelling public regarding operation of bus services as well as on the complaints against the crew's behaviour, operation of chartered trips, issue of Students Concession Ticket and Monthly Season Ticket, checking of buses, collection of penalty, accident investigation, operation of Night Services etc.

TECHNICAL WING

This wing is headed by one General Manager(Technical). The Technical department is under his control .The maintenance of buses in the 25 Depots of this Corporation, Running of Work Shops and other Technical Units are the main functions.

COMPANY SECRETARY

The Company Secretary deals with Company affairs of the Corporation. He is also designated as the Public Information Officer as per the Right to Information Act.

ACCOUNTS DEPARTMENT

This Department is under the head of one officer viz. Financial Adviser and Chief Accounts Officer. The functions are entirely accounts activities of the Corporation. The other functions are the settlement of terminal benefits to the out going employees, preparation of Annual Accounts and Budget etc.

AUDIT DEPARTMENT

Separate Internal Audit Wing is functioning under the head of the Chief Audit Officer. The Audit Department also co-ordinates with Internal Auditors (External agencies) and obtain periodical reports from them.

CHIEF VIGILANCE OFFICER

One Senior Police Officer namely Thiru.S.P.Mathur, IPS, ADGP, is posted as Chief Vigilance Officer of this Corporation, under his control one Vigilance Officer namely Thiru. J.Ravindran, Superintendent of Police / Vigilance Officer is working.

WORKING HOURS OF THE DEPARTMENT

Corporate Office : Six days a week
(Except 2nd. Saturday)
Time: 1000AM to 5.45 PM
Lunch break: 1.00 PM to 1.30 PM

Branches / Workshop Office -do-

METROPOLITAN TRANSPORT CORPORATION (CHENNAI) LIMITED:
PALLAVAN HOUSE, ANNA SALAI, CHENNAI - 600 002

EPABX No .23455801

FAX No. 23455830

E.MAIL ADDRESS: **mtc_chennai@vsnl.net.**

ACCIDENT BRANCH : 23455855

WIRELESS: : 23455858

: 23455859

Designation	Name Thiruvallargal	<u>Direct</u>	<u>Office Extn.</u>
Chairman	Debendranath Sarangi IAS.	25671475	-
Managing Director	R.Balasubramanian	23455833	222
Chief Vigilance Officer	S.P.Mathur, IPS.	25363513	202
General Manager (Admn)	K.S.Sridharan	23455835	225
General Manager (Opn)	M.Ramasubramanian	23455832	235
General Manager (Tech)	J.S.Gunasekaran Jothi Moses	23455834	232
FA&CAO	R.Soleswaran	23455831	203
Audit Officer	E. Saravanan	23455836	204
Regional Manager Ayanavaram	B.Ramanathan	23455839	231
Deputy Manager (Accounts)	R.Subramanian	-	223
Deputy Manager (P&D)	V.P.Janakiram	-	275
Secretary	M.Chandrasekhar	-	234
S.G.A.M (Safety & Civil)	P.Rajan	23455855	256
Works Manager MTCW / CPD	R.N.Sukumaran	23455838	243
Works Manager (RWS) TDII	E.Ranganathan	23455827	-
S.G.AM.(TTE&G)	V.Babu	25911092	-

Designation	Name	<u>Direct</u>	<u>Office</u> <u>Extn.</u>
Deputy Manager (Purchase) (Hardware)	S.Subbiah	22652398	-
Chief Medical Officer	Dr.M.Murthy	-	214
SGAM (B&C)	R.Balasundaram	-	241
SGAM (Bills)	P.K.Murali Rao	-	238
SGAM (Cash)	M.Padma	-	260
Deputy Manager (PF - TRUST)	H.Markandan	23455847	270
Deputy Manager (EDP)	G.Thangarajan	23455844	259
SGAM (Purchase & Spareparts)	A.Sriramar	23455840	217
Assistant Manager (Audit)	N.Venkitasamy	-	263
Deputy Manager (Legal (MACT) & DISP)	K.Malaikkannu	-	233
Assistant Manager (Legal - C.M. & Persn.)	T.K.Venkataraman	-	218
Assistant Manager (Legal (MACT))	A.K.Kalaimani	-	205
Assistant Manager (Safety & Training)	S.Avudainayagam		209
Assistant Manager (TTC)	P.Ramasamy		228
Public Relations Officer	K.Shanmugam	23455866	236
Duty Inspector (Operation)		23455846	
Deputy Manager (Revenue)	S.Rajendran	-	-
Area Officer (Adyar)	R.M.Cheralathan	-	-
Area Officer (Poonamallee)	R.Sekar	-	-

Office

Designation	Name	<u>Direct</u>	<u>Extn.</u>
ADYAR REGION			
Regional Manager	S.Radahakrishnan	23455853	-
Branch Manager (Adyar)	S.Selvamani	23455860	-
Branch Manager (Mandaveli)	J.Edwin Samuel	24939559	-
Branch Manager (Thiruvanmiyur)	S.Gnansambandam	23455820	-
Branch Manager (Alandur)	S.Palanivelu	23455802	-
Branch Manager (Chromepet)	K.S.Gopalarithnam	22230703	-
VADAPALANI REGION			
Branch Manager (Tambaram)	K.Ramadoss	22368281	-
Branch Manager (Vadapalani)	S.Natarajan	23624416	-
Branch Manager (KK Nagar)	B.Ramamoorthy	23455812	-
Branch Manager (Iyyappanthangal)	H.Abdul Munaf	24768394	-
Branch Manager (T. Nagar)	R.Subramanian	23455819	-
Branch Manager (Saidapet)	V.Ravindran	23455817	-
Branch Manager (Poonamallee)	R.V.Mohan Kumar	26272405	-

Designation	Name	<u>Direct</u>	<u>Office</u> <u>Extn.</u>
AYANAVARAM REGION			
Regional Manager	B.Ramanathan	23455854	-
Branch Manager (Ayanavaram)	V.Daskhinamoorthy	23455806	-
Branch Manager (Ambattur)	A.M.Vijayakumar	23455803	-
Branch Manager (Anna Nagar)	S.Kulothungan	26150438	-
Branch Manager (Avadi)	A.M.Mariappan	26381181	-
Branch Manager (Perambur)	M.Narayanamoorthy	23455815	-
Branch Manager (Central Depot- I)	S. Neduchejian	23455808	-
TONDIARPET REGION			
Regional Manager	S.Paranthaman		
Branch Manager (Tondiarpet-I)	K.Rajendran	25913064	-
Branch Manager (Tondiarpet-II)	S.Kirubanandam	25911091	-
Branch Manager (Thiruvottiyur)	S.Gurudesikan	23455821	-
Branch Manager (Ennore)	K.Gnanasekaran	25750443	-
Branch Manager (Basin Bridge)	G.Selvan	25203223	-
Branch Manager (Vyasarpadi)	R.A.Dharmalingam	23455825	-
Branch Manager (Madhavaram)	P.Ramaseamy	23455813	-

1.GENERAL INFORMATION ABOUT AREA OF OPERATION:

Chennai Metropolitan Area (CMA) covers an Area of 1177 Square Kms. of which 172 Square Kms. forms the city proper. Chennai Metropolitan Area had a population of 5.7 millions in 1991 and it has increased to 7 millions now.

The Metropolitan Transport Corporation with a fleet strength of 2773 vehicles is operating 2554 services in 500 routes from 25 Depots spread all over the Chennai Metropolitan Area. The bus utilisation is 267 Km. per day . 18,300 Employees are working in MTC. MTC has 73 established terminals from where the buses are operated and it has 151 wayside terminals for convenience of the travelling public. About 37 lakhs passengers travel daily in MTC buses.

2. DIFFERENT TYPES OF SERVICES:

The MTC has a good network of routes unlike other states, connecting directly different parts of Chennai with other parts of Chennai. The maximum route length is 43.70 Kms. between Broadway and Kovalam.

MTC Limited is operating bus services in different types with different rate of fare approved by the Government are as follows:

- | | |
|-----------------------|-----------------------------------|
| a) Ordinary Services | - White Board with Black Letters |
| b) L.S.S./PP Services | - Yellow Board with Black Letters |
| c) Express Services | - White Board with Green Letters |
| d) Deluxe Services | - Green Board with Blue Letters |
| e) M Services | - White Board with Blue Letters |
| f) Night Services | - Black Board with White Letters |

MTC has an established Transportation Planning Division, which prepares route plans and schedules for the operation of buses. Specials are also operated during Fairs & Festivals. For the benefit of Industrial workers, Cine goers and for the public coming from other districts / other cities in other mode of Transport like district services / long distance trains during nights, Late Hour Service and Night Services are operated in selected routes. For the benefit of the passengers, where there is no terminal facility Night Halt Services are operated in selected routes to provide early morning service and Late Night Service. For monitoring the operation of buses, the Time Keepers are posted at the terminals and Traffic Officers with Wireless sets are moving around the Chennai Metropolitan Area. MTC is also having checking squads which function round the clock monitoring the Ticket-less Travel and the crew behaviour.

3.CONCESSION TICKET ISSUED BY THE MTC LIMITED:

50% Concession Tickets to the Students studying above 12th Standard in all Colleges, Technical Institutions (I.T.I. Polytechnic & Engineering) Medical Colleges (M.B.B.S. and other Branches of Medicine) are issued to travel in buses from their Residence to College and back to their Residence on all days including Holidays. The Evening College and Technical Education Part -time Students are also eligible for this concession tickets. Further, tokens are issued at a cost of Rs.2/- each, upto a maximum of 60 tokens per month to College Students travelling in MTC buses for visits to Library and back to their Residence. Cost of Students Concession Tickets are given below:

For first 2Kms.	Rs.40/-
upto 4 Kms.	Rs.40/-
upto 6 Kms.	Rs.60/-
upto 8 Kms.	Rs.60/-
upto 10 Kms.	Rs.70/-
Above 10 Kms.	Rs.80/-

4. 50% STUDENT CONCESSION TICKET

1.PROCEDURE:

Issue of 50% Student concession application forms, Registration, and issue of point to point card with tokens for the first month of every academic year is being done through the concerned educational institutions. For the remaining months point to point card and Tokens will be issued directly to the student at the M.T.C.'s sales counters.

2.ISSUING POINTS:

In M.T.C.'s area of operation, 50% S.C.T., point to point card and tokens are issued at the following terminii.

Working Hours: 08.30 Hours to 11.00 Hours
15.00 Hours to 19.30 Hours

Sales Counters available at:-

Adyar, K.K.Nagar, Saidapet, Guindy, Velachery, Mandaveli, Tambaram West, Pallavaram, T.Nagar, Thiruvanmiyur, Iyyappanthangal, Vadapalani, Highcourt, Broadway, Ambathur Industrial Estate, Ambattur O.T., Anna Nagar West, Avadi, Ayanavaram, Perambur, C.M.B.T., V.Nagar, Redhills, M.K.B.Nagar, Villivakkam, Tondiarpet, Thiruvottiyur, Poonamallee.

3.PERIOD OF ISSUE:

50% S.C.T. tickets are issued from 1 to 15th every month.

5 .M.ST. CARD

Monthly Season Tickets are being sold by collecting 40 trips the LSS Fare from the origin to destination with permission to travel 60 trips (daily 2 trips).

1.PROCEDURE:

Commuters those who like to get the M.S.T. should get first an Identity card which is also sold at all M.T.C.'s sales counters at the cost of Rs.5/-.

After producing the Identity card only, the M.S.T. Card will be issued to the commuter mentioning his Identity Card No. on it.

2.ISSUING POINTS:

All the sales counters indicated in pre-page.

3.PERIOD OF ISSUE:

M.S.T. Cards are issued from 1st to 20th of every month.

6.TRAVEL AS YOU PLEASE TICKET

Passengers can avail Travel As You Please Ticket

1. Holiday one day ticket	Rs.30/-
2. Weekly ticket	Rs.160/-
3. Monthly ticket	Rs.600/-

These tickets are issued as per the conditions printed on the ticket.

1.PROCEDURE:

Commuters those who like to get the T.A.Y.P.T. card Weekly/Monthly should get first an Identity Card which is also sold at all M.T.C.'s sales counters at the cost of Rs.5/-.

After producing the Identity Card only, the T.A.Y.P.T. cards Weekly/Monthly will be issued to the commuter mentioning his Identity Card No. on it.

2.ISSUING POINTS:

All the sales counters indicated in pre-page.

3.PERIOD OF ISSUE:

Weekly : All Saturdays, Sundays and Mondays

Monthly : From 1st to 20th of every month.

7.CHARTERED TRIP FOR COMPANIES:

Fare: For the first 20 Kms. operation	Rs.1,500/-
For the every additional Km. operation beyond 20 Kms.	Rs. 45/-

8.CHARTERED TRIP FOR PRIVATE PARTIES/SCHOOLS:

Twice the revised LSS Fare for the actual journey performed by the party subject to minimum of 100 passengers.

Reservation Charges: Rs.150/- per bus/Trip.

If the party detains the bus before commencing the journey more than 15 minutes, Detention charges at the rate of Rs.85/- for every block of 15 minutes to be collected on the spot for the period exceeding 15 minutes.

9.CONDITIONS:

1. Chartered trips will be provided within Chennai Metropolitan Area Limits
2. One month charges (for the actual number of working days) shall be paid in Advance.
3. Chartered trip charges shall be paid by D.D.
4. M.T.C. is not liable for compensation or loss if any arises due to non-operation of chartered trips due to unforeseen reasons. Chartered trip charges alone will be refunded in case of non-operation.
5. Information about the cancellation of trips shall be given 24 hours in advance.
Contact Phone No. 23455801,23455832,23455866
Mobile No.9840701777.

10.LUGGAGE FARE:

Passengers can carry hand bags, small box upto 5 Kgs. free of charge. The luggage fare for items meant for sale is given below:

- a) For Vegetable Baskets or Gunny Bags upto 20 Kgs. minimum fare Rs.3/- or single journey fare for the distance involved which ever is higher.
- b) For luggage more than 20 Kgs. minimum fare Rs.6/- or twice the journey fare which ever is higher.
- c) Fish Baskets minimum fare Rs.8/- or twice the journey fare which ever is higher.

11. HIRING OF BUSES BY GOVERNMENT DEPARTMENTS & PRIVATE PARTIES:

- a) Hire charges Rs.3,500/- per day (24 Hours) (i.e. Rs.2,000/-+Rs.15/- per Kms. for a minimum of 100 Kms.)
- b) Timings will be calculated from the departure of the bus from the Depot
- c) Further details of Terms and Conditions of hiring can be had from the public relations Officers of MTC Limited.

ROUTE AND SERVICE CLASSIFICATION ON TYPES OF OPERATION

PERIOD : 12/05

SL. NO	ROUTE NO.	DEPOT		ORIGIN	DESTINATION	TOT. SER.	O R D	L S S	P P	E X P	D E P L	M I R	C G S
1	1	TVT	1	THIRUVOTRIYUR	THIRUVANMIYUR	11	2	8		1			
	1	TVM				10	2	6		2			
	1CUT	TVM		THIRUVOTRIYUR	THIRUVANMIYUR	1					1		
	1CUT	CD		CENTRAL R.S.	THIRUVANMIYUR	1					1		
2	1B	TD1	1	THIRUVOTRIYUR	TAMBARAM B.S.	5		2		3			
	1B	TVT				2				2			
	1B	ALD				3		2		1			
3	1C	END	1	ENNORE (VIA LEYLAND)	THIRUVANMIYUR	4		4					
	1C	TVM				3		3					
4	1D	END	1	ENNORE (VIA THAZHAN)	THIRUVANMIYUR	2	2						
	1D	TVM				2		2					
5	1E	END	1	ENNORE	TRIPPLICANE	6		6					
6	1F	TD2	1	I.O.C.	THIRUVANMIYUR	1		1					
7	1G	TD1	1	THIRUVOTRIYUR	VELACHERY	3				3			
	1GCUT	CD		HIGHCOURT	MADIPAKKAM B.S.	3		3					

SL. NO	ROUTE NO.	DEPOT	ORIGIN	DESTINATION	TOT. SER.	O R D	L S S	P P	E X P	D E M	C I R	G S
8	1K	TVT	1 THIRUVOTTIYUR	T.NAGAR B.S.	2	2						
9	1M	VYD	1 K.KANNADASAN NAGAR	THIRUVANMIYUR	2	2						
10	T1	TD2	1 ROYAPURAM	THIRUVANMIYUR	4	4						
11	2A	VYD	1 ANNA SQUARE	M.K.B.NAGAR	6	6						
	2AEXT	VYD	ANNA SQUARE	KANNADASAN NAGAR	4	4						
12	4	TD1	1 TOLLGATE	THIRUVANMIYUR	5	5						
	4	ADY			3	3						
13	5	ADY	1 HIGHCOURT	TARAMANI	4	4						
14	5A	CPD	1 T.NAGAR B.S.	TAMBARAM B.S.	8	5	3					
	5A	SPD			7	5	2					
	5A	TND			7	7						
15	5B	TND	1 MYLAPORE	T.NAGAR B.S.	3	3						
	5B	MND			5	5						
16	5C	ADY	1 HIGHCOURT	TARAMANI	6	6						
17	5E	ADY	1 VADAPALANI	BESANT NAGAR	7	7						
	5E	VPD			5	5						
	5EEXT	VPD	C.M.B.T.	BESANT NAGAR	4	4						
18	5K	MND	1 MYLAPORE	TARAMANI	1	1						

SL. NO	ROUTE NO.	DEPOT		ORIGIN	DESTINATION	TOT. SER.	O R D	L S S	P P	E X P	D E M	C I R	G S
19	5T	VPD	1	VADAPALANI	TARAMANI	5	5						
	5T/5EX	VPD		VADAPALANI	SRINIVASAPURAM	1	1						
20	6A	TD1	1	TOLLGATE	BESANT NAGAR	4	4						
	6A	ADY				3	3						
	6D	TD1		TOLLGATE	THIRUVANMIYUR	2	2						
21	6D	TD2	1			7	7						
	6D	TVM				7	7						
	6DEXT	TD1		SATHUMA NAGAR	THIRUVANMIYUR	1	1						
22	6E	TD1	1	TOLLGATE	THIRUVANMIYUR	1	1						
23	7A	PBD	1	BROADWAY	PERAMBUR	1	1						
24	7B	AYD	1	BROADWAY	KORATTUR	10	10						
25	7E	AMD	1	BROADWAY	AMBATTUR ESTATE	3	3						
26	7F	AND	1	BROADWAY	ANNANAGAR WEST	11	11						
27	7FEXT	AND	1	BROADWAY	C.M.B.T.	2	2						
28	7G	VYD	1	BROADWAY	KANNADASAN NAGAR	10	10						
29	7H	AND	1	BROADWAY	MOGAPPAIR EAST	10	10						
	7HEXT	AMD		BROADWAY	AMBATTUR ESTATE	3	3						

SL. NO	ROUTE NO.	DEPOT	ORIGIN	DESTINATION	TOT. SER.	O R D	L S S	P P	E X P	D E P L	M I R	C G S
	7HCUT	AND	BROADWAY	ELANGONAGAR OFFICER'S COL	1	1						
30	7K	AND	1 BROADWAY	PADIKUPPAM	1	1						
31	7M	AND	1 BROADWAY	J.J.NAGAR WEST	6	6						
	7M	CD			2	2						
32	8A	TD2	1 TOLLGATE	PERIYAR NAGAR	3	3						
33	8B	AYD	1 BROADWAY	THIRU-VI-KA NAGAR	7	7						
34	9M	TND	1 T.NAGAR B.S.	A.G.S. OFFICERS COLONY	4	4						
35	10	KND	1 PARRYS	T.NAGAR B.S.	2	2						
36	10A	KND	1 TOLLGATE	SAIDAPET WEST	3	3						
37	11	TND	1 HIGHCOURT	T.NAGAR B.S.	6	6						
38	11A	TND	1 VALLALAR NAGAR	T.NAGAR B.S.	5	5						
	11A	VYD			4	4						
	11AEX	VYD	M.K.B.NAGAR EAST	T.NAGAR B.S.	2	2						
39	11G	KND	1 HIGHCOURT	K.K.NAGAR	11	11						
40	11H	IYP	1 HIGHCOURT	IYAPPANTHANGAL	11	11						
	11H	KND			8	8						
41	12	TND	1 T.NAGAR B.S.	V.HOUSE	4	4						

SL. NO	ROUTE NO.	DEPOT	ORIGIN	DESTINATION	TOT. SER.	O R D	L S S	P P	E X P	D E L	M I R	C G S
42	12B	VPD	1 VADAPALANI	FORESHORE ESTATE	15	15						
	12BEXT	VPD	C.M.B.T.	FORESHORE ESTATE	4	4						
43	12C	VPD	1 SALIGRAMAM	MYLAPORE	8	8						
44	12G	KND	1 ANNA SQUARE	K.K.NAGAR	14	14						
	12GEX	KND	ANNA SQUARE	RAMAPURAM	1	1						
45	12H	IYP	1 IYAPPANTHANGAL	FORESHORE ESTATE	3	3						
46	13	TND	1 T.NAGAR B.S.	TRIPPLICANE O.T.	8	8						
47	13B	TND	1 T.NAGAR B.S.	ANNA SQUARE	3	3						
48	15	AND	1 BROADWAY	ANNANAGAR B.S.	2	2						
49	15B	AND	1 BROADWAY	C.M.B.T.	18	18						
	15BX	AND	BROADWAY	MADURAVOYAL	1	1						
	15BEXT	END	BROADWAY	ENNORE(VIA THAZHANKUPPAM)	1	1						
50	15D	AND	1 BROADWAY	ANNANAGAR WEST	2	2						
51	15F	VPD	1 BROADWAY	VADAPALANI	8	8						
	15FCUT	VPD	BROADWAY	KOYAMBEDU MARKET	4	4						

SL. NO	ROUTE NO.	DEPOT		ORIGIN	DESTINATION	TOT. SER.	O R D	L S S	P P	E X P	D E M	C I R	G S
	15FCUT	AND				2	2						
52	15G	AND	1	BROADWAY	M.M.D.A.COLONY	10	10						
	15GEX	AND		BROADWAY	KOYAMBEDU MARKET	1	1						
53	15L	AVD	1	BROADWAY	AMBATTUR O.T.	2	2						
	15LCUT	AMD		BROADWAY	ATHIPET I.C.F.	1	1						
	15LEXT	AMD		BROADWAY	GNANAMOORTHY NAGAR	1	1						
54	17	VPD	1	HIGHCOURT	VADAPALANI	5	5						
55	17A	VPD	1	BROADWAY	KOYAMBEU MARKET	3	3						
56	17B	IYP	1	HIGHCOURT	MANGADU	3	3						
	17BCUT	IYP		KOYAMBEDU MARKET	MANGADU	1	1						
57	17C	IYP	1	HIGHCOURT	IYAPPANTHANGAL	2	2						
58	17D	KND	1	HIGHCOURT	K.K.NAGAR B.S.	14	14						
	17D	CD				3	3						
59	17E	VPD	1	HIGHCOURT	SALIGRAMAM	6	6						
	17E	CD				2	2						
60	17G	VPD	1	HIGHCOURT	MUGALIVAKKAM	1	1						
	17GCUT	IYP		HIGHCOURT	MOULIVAKKAM	1	1						

SL. NO	ROUTE NO.	DEPOT		ORIGIN	DESTINATION	TOT. SER.	O R D	L S S	P P	E X P	D E P L	M I R	C G S
61	17K	VPD	1	HIGHCOURT	DASARATHAPURAM	2	2						
62	17M	IYP	1	HIGHCOURT	IYAPPANTHANGAL	14	4	10					
63	17MEXT	VPD	1	HIGHCOURT	SALIGRAMAM	2	2						
	17MCUT	VPD		HIGHCOURT	VADAPALANI	3	3						
	17MCUT	CD				2	2						
64	G17	VPD	1	HIGHCOURT	MUGALIVAKKAM	1	1						
65	18	SPD	1	HIGHCOURT	SAIDAPET	3	3						
	18CUT	ALD		HIGHCOURT/PERIYAR BRIDGE	SAIDAPET/GUINDY ESTATE	1	1						
66	18A	TBD	1	HIGHCOURT	TAMBARAM B.S.	4	4						
67	18B	ADY	1	HIGHCOURT	KOTTURPURAM	1	1						
	18BCUT	ADY		KOYAMBEDU MARKET	KOTTURPURAM	1	1						
68	18D	CD	1	HIGHCOURT	KILKATTALAI	2	2						
	18D	SPD				2	1	1					
	18DEXT	ALD		HIGHCOURT	PALLAVARAM GATE	2	2						
69	18E	ALD	1	HIGHCOURT	RAMAPURAM	3	3						
	18ECUT	ALD		T.NAGAR B.S.	RAMAPURAM	1	1						

SL. NO	ROUTE NO.	DEPOT		ORIGIN	DESTINATION	TOT. SER.	O R D	L S S	P P	E X P	D E M	C I R	G S
70	18H	TBD	1	TAMBARAM	NADUVEERAPATTU	1	1						
71	18K	KND	1	HIGHCOURT	SAIDAPET WEST	8	8						
72	K18	KND	1	HIGHCOURT	SAIDAPET WEST-VIA GUINDY	7	7						
73	18M	VPD	1	VADAPALANI	TAMBARAM B.S.	5	5						
	18M	TBD				2	2						
74	18P	ALD	1	HIGHCOURT	VELACHERY HOSPITAL	2	2						
75	18T	ALD	1	HIGHCOURT	DHARMARAJ KOIL	1	1						
76	A18	TBD	1	HIGHCOURT	VANDALLOOR ZOO	8	8						
	A18	CD				4	4						
	A18CU	TBD		HIGHCOURT	PERUNGALATHUR	1	1						
	A18CUT	TBD		HIGHCOURT	TAMBARAM B.S.	8	3			5			
	A18CUT	CD				1	1						
	18ALSS	TBD		HIGHCOURT	TAMBARAM B.S. (D.DECK)	10	10						
77	B18	TD1	1	KORUKKUPET R.S.	VANDALLOOR ZOO	11	8			3			
78	B18EXT	VYD	1	MULLAI NAGAR	VANDALLOOR ZOO	2				2			
79	E18	TBD	1	HIGHCOURT	GUDUVANCHERY	20				20			
80	G18	TBD	1	T.NAGAR B.S.	GUDUVANCHERY	4	4						

SL. NO	ROUTE NO.	DEPOT	ORIGIN	DESTINATION	TOT. SER.	O R D	L S S	P P	E X P	D E L	M I	C R	G S
	G18	TND			3		3						
	G18	VPD			8		7	1					
81	L18	TBD	1 HIGHCOURT	MUDICHUR	1		1						
82	19	TND	1 T.NAGAR B.S.	KANATHUR	3	3							
83	19A	TVM	1 T.NAGAR	KELAMBAKKAM	2	2							
84	19B	TVM	1 SAIDAPET	KELAMBAKKAM	9		9						
	19B	ADY			4		4						
	19B	SPD			1		1						
85	19C	ADY	1 T.NAGAR B.S.	SHOLINGANALLUR	6		6						
	19C	SPD			3		3						
86	19E	CD	1 BROADWAY	KOVALAM	1		1						
87	19G	TVM	1 BROADWAY	KOVALAM	8		4	4					
	19G	CD			2		2						
	19GCT	ADY	BROADWAY	SRINIVASAPURAM	1	1							
88	G19	SPD	1 T.NAGAR	KOVALAM	2		2						
	19KCU	ADY	ADAYAR B.S.	SIRUCHERI	1		1						
89	PP19	TVM	1 BROADWAY	INJAMBAKKAM	5		5						
	PP19	CD			2		2						

SL. NO	ROUTE NO.	DEPOT	ORIGIN	DESTINATION	TOT. SER.	O R D	L S S	P P	E X P L	D E M I	C I R	G S
	PP19	ADY			2			2				
	PP19EX	TVM	BROADWAY	KOVALAM	4		1		2	1		
	PP19EX	CD			2		2					
	PP19EX	ADY			2				2			
90	T19	ADY	1 T.NAGAR B.S.	KANNAGI NAGAR S.C.BOARD	2	2						
91	20	AYD	1 BROADWAY	VILLVAKKAM	12	12						
92	20A	AMD	1 BROADWAY	MOGAPPAIR	1	1						
93	20B	AMD	1 BROADWAY	MENAMBEDU	3	3						
94	20C	AVD	1 BROADWAY	ORAGADAM	3	3						
95	20D	AYD	1 BROADWAY	THIRUVERKADU	1	1						
	20ECUT	AMD	AYANAVARAM B.S.	AYAPPAKKAM	1	1						
96	20H	AND	1 C.M.B.T.	KARUKKU	1	1						
97	20K	AMD	1 BROADWAY	THIRUVERKADU	1	1						
98	20M	AYD	1 BROADWAY	PERAVALLUR KUMARN NAGAR	2	2						
99	21	MND	1 HIGHCOURT	MANDAVELI	12	12						
100	21D	ADY	1 HIGHCOURT	INDIRANAGAR WATER TANK	2	2						
101	21E	CD	1 HIGHCOURT	NANDAMPAKKAM	2	2						

SL. NO	ROUTE NO.	DEPOT		ORIGIN	DESTINATION	TOT. SER.	O R D	L S S	P P	E X P L	D E M I	C I R	G S
	21EEXT	ALD		HIGHCOURT	PORUR	2	2						
102	21EEXT	PMD	1			2	2						
103	21G	TBD	1	BROADWAY	TAMBARAM B.S.	15	6			5 4			
	21G	CD				6				4 2			
	21G	MND				5	5						
104	21H	TVM	1	BROADWAY	KELAMBAKKAM	17	17						
	21H	CD				2	2						
	21H	ADY				2				2			
105	21K	KND	1	HIGHCOURT	BHARATH ELECTRONICS	3	3						
106	21L	ADY	1	HIGHCOURT	VELACHERY	15	15						
	21LEXT	ADY		HIGHCOURT	KILKATTALAI	1	1						
107	21M88K	ALD	1	BROADWAY	KOVOOR	1	1						
108	PP21	TBD	1	HIGHCOURT	GUDUVANCHERY	2				2			
	PP21	CD				2	2						
	PP21	ADY				8				8			
	PP21	TVM				1				1			
109	T21	ADY	1	BROADWAY	KANNAGI NAGAR S.C.BOARD	4	4						
110	S21	ADY	1	BROADWAY	KANNAGI NAGAR S.C.BOARD	4	4						
111	22	AYD	1	AYANAVARAM B.S.	ANNA SQUARE	5	5						

SL. NO	ROUTE NO.	DEPOT		ORIGIN	DESTINATION	TOT. SER.	O R D	L S S	P P	E X P	D E L	M I R	C G S
112	22A	AYD	1	THIRUVANMIYUR	AMBATTUR ESTATE	5	5						
	22A	TVM				3	3						
113	22C	AYD	1	AMBATTUR O.T.	ANNA SQUARE	2	2						
114	23A	TVM	1	PALAVAKKAM VISRANTHI	EGMORE R.S.	1	1						
115	23C	ADY	1	BESANT NAGAR	AYANAVARAM B.S.	15	7	8					
	23C	AYD				12	5	7					
116	23G	ADY	1	BESANT NAGAR	EGMORE R.S.	2	2						
117	23H	AND	1	KORATTUR	THIRUVANMIYUR	2	2						
118	23K	ADY	1	BESANT NAGAR	EGMORE R.S.	1	1						
	23M	VPD		THIRUVANMIYUR	C.M.B.T.	1	1						
119	23M	ADY	1			5	5						
120	24A	AND	1	ANNANAGAR WEST	V.HOUSE	7	7						
121	24C	AVD	1	AVADI	V.HOUSE	7	7						
	24C	MND				2	2						
	24C	AND				3	3						
122	25	VPD	1	VADAPALANI	TRIPPLICANE	3	3						
123	25E	KND	1	ANNA SQUARE	K.K.NAGAR B.S.	2	2						
124	25G	PMD	1	ANNA SQUARE	POONAMALLEE	8	8						

SL. NO	ROUTE NO.	DEPOT		ORIGIN	DESTINATION	TOT. SER.	O R D	L S S	P P	E X P	D E L	M I R	C G S
	25G	VPD				9	9						
	25G	IYP				6	6						
125	25M	MND	1	MYLAPORE	AGARAMEL	1	1						
126	27B	AND	1	C.M.B.T.	ANNA SQUARE	14	14						
	27BCUT	AND		M.M.D.A.COLONY	ANNA SQUARE	1	1						
127	27C	TND	1	T.NAGAR B.S.	THIRUVERKADU	14	14						
128	27D	AYD	1	FORESHORE ESTATE	VILLIVAKKAM	10	10						
	27D	MND				6	6						
129	27H	AND	1	ANNA SQUARE	AVADI	8	8						
	27H	AVD				9	9						
130	27K	MND	1	VILLIVAKKAM (VIA GREAMS)	FORESHORE ESTATE	2	2						
131	27L	MND	1	MOGAPPAIR WEST	ANNA SQUARE	6	6						
132	28	TVT	1	THIRUVOTRIYUR	EGMORE R.S.	8	8						
133	28A	TD1	1	EGMORE R.S.	MANALI NEWTOWN	3	3						
	28ACT	TD1		VALLALAR NAGAR	MANALI NEWTOWN	3	3						
134	28B	END	1	ENNORE	EGMORE R.S.	11	11						
135	28C	TD1	1	Q.M.ARTS COLLEGE	TOLLGATE	2	2						

SL. NO	ROUTE NO.	DEPOT		ORIGIN	DESTINATION	TOT. SER.	O R D	L S S	P P	E X P	D E M	C I R	G S
136	29	PBD	1	PERIYAR NAGAR	Q.M.ARTS.COLLEGE	4	4						
	29EXN	PBD		VINAYAGAPURARM	Q.M.ARTS.COLLGEE	1		1					
137	29A	PBD	1	PERAMBUR	ANNA SQUARE	17	17						
	29AEX	PBD		PERAVALLUR KUMARAN NAGAR	ANNA SQUARE	1		1					
138	29B	PBD	1	PERAMBUR	SAIDAPET	4	4						
	29B	SPD				4	4						
	29BEXT	PBD		PERIYAR NAGAR	VELACHERY	1		1					
139	29C	PBD	1	PERAMBUR	BESANT NAGAR	11	11						
	29C	ADY				16	16						
	29CSP	PBD		PERAMBUR	BESANT NAGAR	2	2						
	29CCUT	MND		PERAMBUR	MANDAVELI	2	2						
	29CCT	AYD		I.C.F.	BESANT NAGAR	1	1						
	29CXT	MVD		M.M.C.	THIRUVANMIYUR	2		2					
	29DEXT	MVD		MATHUR M.M.D.A	VIVEKANANDA HOUSE	3	3						
140	29E	PBD	1	PERAMBUR	THIRUVERKKADU	11	11						
141	29K	MND	1	C.M.B.T.	MANDAVELI	1	1						

SL. NO	ROUTE NO.	DEPOT		ORIGIN	DESTINATION	TOT. SER.	O R D	L S S	P P	E X P	D E L	M I R	C G S
142	29L	PBD	1	THIRUVANMIYUR	PERIYAR NAGAR	3	3						
	29L	TVM				3	3						
143	29M	PBD	1	PERAMBUR	THIRUVANMIYUR	3	3						
	29M	TVM				3	3						
144	29N	PBD	1	PERAMBUR	VELACHERY	2	2						
	29N	SPD				5	5						
	29NEXT	PBD		PERAVALLUR KUMARN NAGAR	VELACHERY	1	1						
145	A29C	ADY	1	KOYAMBEDU MARKET	BESANT NAGAR	1	1						
146	B29C	PBD	1	PERIYAR NAGAR	BESANT NAGAR	1	1						
147	31	TD1	1	ROYAPURAM M.C.	FORESHORE ESTATE	2	2						
148	32	BBD	1	VALLALAR NAGAR	V.HOUSE	8	8						
	32EXT	VYD		MULLAI NAGAR	V.HOUSE	2	2						
149	32A	TD1	1	TOLLGATE	FORESHORE ESTATE	12	12						
	32A	TD2				2	2						
150	32B	TD1	1	KORUKKUPET R.S.	V.HOUSE	8	8						
151	33	VYD	1	BROADWAY	M.K.B.NAGAR	7	5	2					
	33A	VYD		MUTHAMIZH NAGAR	BROADWAY	1	1						

SL. NO	ROUTE NO.	DEPOT	ORIGIN	DESTINATION	TOT. SER.	O R D	L S S	P P	E X P L	D E M I	C I R	G S
152	34	AMD	1 AMBATTUR ESTATE	THIRUVOTRIYUR	8		6		2			
	34	TVT			4				4			
	34EXT	AMD	THIRUVOTRIYUR	J.J.NAGAR WEST	1		1					
153	35	AYD	1 BROADWAY	AYANAVARAM B.S.	1	1						
154	37	VPD	1 VALLALAR NAGAR	IYAPPANTHANGAL	4	1	3					
155	37B	VPD	1 VADAPALANI	THIRU-VI-KA NAGAR	5	5						
156	37C	AYD	1 VADAPALANI	VILLIVAKKAM	1	1						
157	37D	TD2	1 VALLALAR NAGAR	K.K.NAGAR	5		5					
	37D	VYD			3		3					
	37D	KND			6		6					
158	37E	VPD	1 K.KANNADASAN NAGAR	VADAPALANI	2	2						
	37ECUT	VPD	M.K.B.NAGAR	VADAPALANI	1	1						
	37ECUT	VYD			2	2						
159	37G	IYP	1 IYAPPANTHANGAL	VALLALAR NAGAR	12		12					
	37G	TD2			6	2	4					
	37G	BBD			4		4					
160	38C	PBD	1 THIRU-VI-KA NAGAR	V.HOUSE	9	9						
161	38D	TVT	1 THIRUVANMIYUR	KODUNGAIYUR PARVATHYNAGAR	1	1						

SL. NO	ROUTE NO.	DEPOT		ORIGIN	DESTINATION	TOT. SER.	O R D	L S S	P P	E X P	D E P L	M I R	C G S
162	38F	MVD	1	MADHAVARAM VILLAGE	MYLAPORE	7	7						
163	38G	MVD	1	BROADWAY	VAZHUTHIGAIMEDU	2	2						
164	38H	MVD	1	BROADWAY	MADHAVARAM VILLAGE	2	2						
165	38HEXT	MVD	1	BROADWAY	M.M.C.	1	1						
166	38L	VYD	1	BROADWAY	KODUNGAIYUR PARVATHYNAGAR	1	1						
167	40	AMD	1	ANNA SQUARE	AMBATTUR O.T.	2	2						
	40EXT	AMD		ANNA SQUARE	MENAMBEDU	1	1						
168	40A	AVD	1	ANNA SQUARE	AVADI	6	6						
	40A	CD				6	6						
	40ACUT	AVD		AVADI	EGMORE R.S.	2	2						
169	C41	ADY	1	THIRUVANMIYUR	MOGAPPAIR WEST	4	4						
	41C	AND		THIRUVANMIYUR	ANNANAGAR WEST	4	4						
170	41D	AMD	1	MANDAVELI	AMBATTUR O.T.	4	4						
	41D	AND				2	2						
	41D	MND				12	12						
171	41F	VPD	1	KOYAMBEDU MARKET	MANDAVELI	1	1						
172	41H	AMD	1	KORATTUR	MANDAVELI	1	1						

SL. NO	ROUTE NO.	DEPOT	ORIGIN	DESTINATION	TOT. SER.	O R D	L S S	P P	E X P	D E L	M I R	C G S
173	42	PBD	1 BROADWAY	PERIYAR NAGAR	10	10						
	42EXT	PBD	BROADWAY	G.K.M.COLONY	1	1						
174	42B	PBD	1 BROADWAY	POOMBUHAR	4	4						
175	42C	PBD	1 BROADWAY	TEACHER'S COLONY	2	2						
176	42D	PBD	1 BROADWAY	SRINIVASA NAGAR	2	2						
177	44	TD2	1 BROADWAY	MANALI	4	4						
178	44A	TD2	1 BROADWAY	I.O.C.	5	5						
179	44B	TD1	1 BROADWAY	MANALI NEWTOWN	4	4						
180	44C	TD2	1 BROADWAY	I.O.C.	8	8						
181	44CEXT	TD2	1 I.O.C.	ANNA SQUARE	2	2						
	C44	VYD	BROADWAY	KODUNGAIYUR PARVATHYNAGAR	2	2						
182	45A	SPD	1 ANNA SQUARE	VELACHERY	6	6						
	45AEXT	SPD	V.HOUSE	MADIPAKKAM B.S.	1	1						
183	45B	ALD	1 ANNA SQUARE	GUINDY T.V.K.ESTATE	6	6						
	45B	CD			3	3						
	45BM8	ALD	GUINDY T.V.K.ESTATE	MOGALIVAKKAM	1	1						

SL. NO	ROUTE NO.	DEPOT	ORIGIN	DESTINATION	TOT. SER.	O R D	L S S	P P	E X P	D E P L	M I R	C G S
184	45D	KND	1 VALLALAR NAGAR	SAIDAPET	3	3						
185	45E	SPD	1 ANNA SQUARE	KILKATTALAI	2	2						
	45E	CD			2	2						
186	A45B	ALD	1 ANNA SQUARE	GUINDY T.V.K.ESTATE	4	4						
187	N45B	ALD	1 ANNA SQUARE	NANGANALLUR	2	2						
188	46	PBD	1 THIRU-VI-KA NAGAR	C.M.B.T.	8	8						
	46	AYD			2	2						
189	46A	PBD	1 THIRU-VI-KA NAGAR	C.M.B.T.	2	2						
	46ACT	AYD	KOYAMBEDU MARKET	VILLIVAKKAM	1	1						
190	46B	AND	1 PERIYAR NAGAR	C.M.B.T.	2	2						
	46B	PBD			1	1						
191	46C	AND	1 C.M.B.T.	KODUNGAIYUR PARVATHYNAGAR	1	1						
192	46G	VYD	1 M.K.B.NAGAR EAST	KOYAMBEDU MARKET	1	1						
	G46	VYD	M.K.B.NAGAR EAST	C.M.B.T.	4	4						
	46GEX	VYD	MUTHAMIZH NAGAR	KOYAMBEDU MARKET	1	1						
193	47	ADY	1 ADAYAR B.S.	VILLIVAKKAM	7	7						
	47	AYD			2	2						

SL. NO	ROUTE NO.	DEPOT	ORIGIN	DESTINATION	TOT. SER.	O R D	L S S	P P	E X P	D E L	M I R	C G S
194	47A	ADY	1 I.C.F.	BESANT NAGAR	11	11						
	47A	AYD			6	6						
	47A	AND			2	2						
195	47D	TVM	1 AMBATTUR O.T.	THIRUVANMIYUR	5	2			3			
	47D	AMD			6	3			3			
196	47F	ADY	1 KOTTURPURAM	VILLIVAKKAM	1	1						
197	47G	ADY	1 KORATTUR	BESANT NAGAR	1	1						
198	G47	ADY	1 V.G.P.	KORATTUR	5	5						
199	G47	AYD	1		3	3						
	47G	AND	KORATTUR	BESANT NAGAR	2	2						
200	A47	AMD	1 THIRUVANMIYUR	AMBATTUR O.T.	7	7						
201	A47	TVM	1		6	6						
202	K47	ADY	1 KANNAGI NAGAR S.C.BOARD	KORATTUR	3	3						
203	K47	AYD	1		1	1						
204	T47	AYD	1 TIDEL PARK	VILLIVAKKAM	4	4						
205	48	AYD	1 VALLALAR NAGAR	VILLIVAKKAM	7	7						
206	48A	AMD	1 MADHAVARAM VILLAGE	AMBATTUR ESTATE	1	1						
	48A	MVD			3	3						
	48AEXT	AMD	MADHAVARAM VILLAGE	MOGAPPAIR WEST	1	1						

SL. NO	ROUTE NO.	DEPOT	ORIGIN	DESTINATION	TOT. SER.	O R D	L S S	P P	E X P	D E M	C I R	G S
207	48B	END	1 THIRU-VI-KA NAGAR	ENNORE	1	1						
208	48C	AYD	1 VALLALAR NAGAR	C.M.B.T.	6	6						
	48CET	TD1	KORUKKUPET R.S.	KOYAMBEDU MARKET	1	1						
209	49A	PMD	1 T.NAGAR B.S.	POONAMALLEE	4	4						
	49A	IYP			8	8						
	49A	KND			2	2						
210	49G	KND	1 T.NAGAR B.S.	THIRUVERKADU	1	1						
	49G	VPD			1	1						
211	PP49	KND	1 VALASARAVAKKAM	KOVALAM	6			6				
212	50	PMD	1 BROADWAY	THIRUVERKKADU	2	2						
	50	BBD			2	2						
	50EXT	AND	BROADWAY	IYYAPPAN MADAM	1	1						
213	51	SPD	1 T.NAGAR B.S.	KOLATHUR	4	4						
214	51A	TBD	1 TAMBARAM EAST	AGARAM THEN	3	3						
215	51B	SPD	1 SAIDAPET	KARANAI	4	4						
	51BEXT	SPD	SAIDAPET	KELAMBAKKAM	1	1						
216	51C	CPD	1 HIGHCOURT	TAMBARAM B.S.	1	1						

SL. NO	ROUTE NO.	DEPOT	ORIGIN	DESTINATION	TOT. SER.	O R D	L S S	P P	E X P L	D E M I	C I R	G S
217	51D	TBD	1 HIGHCOURT	TAMBARAM EAST	1	1						
218	51E	SPD	1 SAIDAPET	MADIPAKKAM B.S.	4	4						
219	51F	TND	1 T.NAGAR B.S.	SUNNAMBU KOLATHUR	1	1						
220	51G	TBD	1 TAMBARAM WEST	VENKAIVASAL PH CENTRE	3	3						
221	51H	SPD	1 SAIDAPET	TAMBARAM EAST	1	1						
222	51K	TBD	1 TAMBARAM EAST	NAVALOOR	2	2						
223	51L	KND	1 TAMBARAM EAST	C.M.B.T.	1	1						
224	51M	TND	1 T.NAGAR B.S.	MADIPAKKAM B.S.	2	2						
225	51N	TND	1 T.NAGAR B.S.	MOOVARASAMPET	1	1						
226	51P	ALD	1 HIGHCOURT	PUZHUTHIVAKKAM	2	2						
227	51R	ALD	1 T.NAGAR B.S.	MADIPAKKAM B.S.	2	2						
228	51S	TBD	1 TAMBARAM EAST	SAIDAPET	4	4						
229	51T	TBD	1 TAMBARAM EAST	PONMAR	1	1						
	51TCUT	TBD	TAMBARAM EAST	MADURAMBAKKAM	1	1						
230	A51	CPD	1 HIGHCOURT	TAMBARAM EAST	5	5						

SL. NO	ROUTE NO.	DEPOT	ORIGIN	DESTINATION	TOT. SER.	O R D	L S S	P P	E X P	D E P L	M I R	C G S
	A51	CD			2		2					
	A51	TBD			2		1		1			
231	B51EXT	CD	1 HIGHCOURT	TAMBARAM EAST	1		1					
	B51	SPD	SAIDAPET	TAMBARAM EAST	2		2					
	B51	CPD			2		2					
	B51	ALD			4		4					
232	C51	CPD	1 TAMBARAM	ADAYAR B.S.	6		6					
	C51	ADY			6		6					
233	D51	SPD	1 HIGHCOURT	MEDAVAKKAM	4		4					
	D51	CD			1		1					
234	F51	CD	1 HIGHCOURT	MADIPAKKAM B.S.	2		2					
	H51	TBD	HIGHCOURT	TAMBARAM B.S.	1		1					
	H51EXT	CPD	HIGHCOURT	CHITLAPAKKAM/INDRA NAGAR	1	1						
235	K51	CD	1 HIGHCOURT	BALAJI NAGAR	2		2					
236	T51EXT	CPD	1 TAMBARAM EAST	BESANT NAGAR	4		4					
237	T51	CPD	1 TAMBARAM EAST	THIRUVANMIYUR	6		6					
	T51	TBD			4		4					
	T51	TVM			4		4					
	T51	ADY			4		4					

SL. NO	ROUTE NO.	DEPOT	ORIGIN	DESTINATION	TOT. SER.	O R D	L S S	P P	E X P L	D E M I	C I R	G S
238	PP51	TBD	1 HIGHCOURT	TAMBARAM EAST	3	3						
239	52	CPD	1 BROADWAY	POZHICALUR	3	3						
	52	CD			2	2						
240	52B	CPD	1 HIGHCOURT	HASTINAPURAM	6	5		1				
241	52C	CPD	1 T.NAGAR B.S.	HASTINAPURAM	3	3						
242	52D	CPD	1 HIGHCOURT	CHITLAPAKKAM	1	1						
243	52E	CPD	1 HIGHCOURT	NEMILICHERY	2	2						
244	52G	CPD	1 BROADWAY	GOWL BAZAAR	1	1						
245	52K	SPD	1 HIGHCOURT	KILKATTALAI	4	4						
	52K	CD			3	3						
	52KB10	ALD	HIGHCOURT/EGMORE(52K/B10)	PUZHUTHIVAKKAM	1	1						
246	52L	SPD	1 HIGHCOURT	NANGANALLUR	2	2						
	52L	CD			1	1						
	52P	ALD	HIGHCOURT	MOOVARASAMPET	3	3						
247	53	PMD	1 BROADWAY	POONAMALLEE	8	8						
248	53E	PMD	1 BROADWAY	MANGADU	2	2						
	53E	CD			3	3						

SL. NO	ROUTE NO.	DEPOT	ORIGIN	DESTINATION	TOT. SER.	O R D	L S S	P P	E X P	D E M	C G
	53GCUT	PMD	POONAMALLEE	PADURMEDU	2	2					
249	54	PMD	1 BROADWAY	POONAMALLEE	10	10					
	54	CD			2	2					
250	54A	PMD	1 POONAMALLEE	THIRUNINDRAVOOR	2	2					
251	54B	ALD	1 SAIDAPET	PORUR	2	2					
	54B	SPD			1	1					
252	54CCUT	PMD	1 POONAMALLEE	THANDARAI	2	2					
253	54E	PMD	1 SAIDAPET	MEPPUR	4	4					
254	54F	MND	1 MANDAVELI	POONAMALLEE	2	2					
	54F	PMD			2	2					
255	54G	PMD	1 BROADWAY	KUTHAMPAKKAM	1	1					
256	54K	PMD	1 BROADWAY	NEMAM	2	2					
257	54L	PMD	1 BROADWAY	VELLAVEDU	6	6					
258	54M	IYP	1 BROADWAY	MANGADU	2	2					
259	54P	PMD	1 T.NAGAR	POONAMALLEE B.S.	2	2					
260	54T	PMD	1 BROADWAY	SEMBARAMBAKKAM	1	1					

SL. NO	ROUTE NO.	DEPOT	ORIGIN	DESTINATION	TOT. SER.	O R D	L S S	P P	E X P	D E P	M I R	C G S
	54TCUT	PMD	T.NAGAR B.S.	SEMBARAMBAKKAM	1	1						
261	G54	PMD	1 VELLAVEDU	T.NAGAR	6	6						
262	55	TBD	1 TAMBARAM	MANNIVAKKAM VILLAGE	6	6						
263	55B	TBD	1 TAMBARAM	PAZHANTHANDALAM	1	1						
264	55C	TBD	1 KADAPPERY	MAMBAKKAM ROAD JN.	2	2						
265	55D	TBD	1 TAMBARAM	KEERAPPAKKAM	2	2						
	55DCUT	TBD	TAMBARAM B.S.	KOLAPPAKKAM	1	1						
266	56	END	1 VALLALAR NAGAR	ENNORE	1	1						
267	56C	TVT	1 BROADWAY	THIRUVOTRIYUR(VIA BROADWA	6	6						
	56CET	END	ENNORE	KOYAMBEDU MARKET	1	1						
	56CXT	END	BROADWAY	ANNAI SIVAKAMI NAGAR	1	1						
268	C56C	TVT	1 BROADWAY	THIRUVOTRIYUR (VIA GPO)	6	6						
269	56D	TD1	1 BROADWAY	MANALI	16	8	8					
	56DEX	TD1	BROADWAY	MATHUR M.M.D.A.	1	1						
270	56E	TD2	1 TOLLGATE	MINJUR N.T.	6	6						

SL. NO	ROUTE NO.	DEPOT		ORIGIN	DESTINATION	TOT. SER.	O R D	L S S	P P	E X P	D E P L	M I R	C G S
271	56G	TD1	1	BROADWAY	ODEONMANI	1	1						
272	56K	TVT	1	THIRUVOTRIYUR	REDHILLS	3	2	1					
273	56M	TVT	1	VALLALAR NAGAR	VICHUR	2	2						
274	56N	END	1	BROADWAY	ENNORE	8	8						
	56N	TD1				2	2						
275	56PLSS	TD1	1	BROADWAY	MINJUR N.T.	12	12						
276	C56	END	1	VALLALAR NAGAR	ENNORE	11	11						
277	57	MVD	1	VALLALAR NAGAR	REDHILLS	6	6						
	57	BBD				4	4						
	57	VYD				1	1						
278	57A	BBD	1	VALLALAR NAGAR	ANGADU	1	1						
279	57B	VYD	1	VALLALAR NAGAR	POTHUR	1	1						
280	57C	MVD	1	VALLALAR NAGAR	ARUMANDAI RD. JN.	1	1						
	57CCU	VYD		REDHILLS	GNAYARU	1	1						
281	57D	MVD	1	BROADWAY	POOCHI ATHIPET	2	2						
282	57E	MVD	1	REDHILLS	VICHUR	1	1						

SL. NO	ROUTE NO.	DEPOT	ORIGIN	DESTINATION	TOT. SER.	O R D	L S S	P P	E X P	D E M	C I R	G S
293	60A	CPD	1 BROADWAY	KUNDRATHUR MURUGAN TEMPLE	2	2						
294	60C	CPD	1 BROADWAY	ANAKAPUTHUR	4	4						
295	60E	CPD	1 BROADWAY	KUNDRATHUR B.S.	1	1						
	60E	CD			2	2						
296	60G	CPD	1 BROADWAY	POZHICALUR	1	1						
297	60H	CPD	1 T.NAGAR B.S.	SANKARA HEALTH CENTRE	1	1						
298	61A	AMD	1 AMBATTUR ESTATE	MELAPPEDU	1	1						
299	61B	AVD	1 BROADWAY	ARAKKAMBAKKAM	2	2						
	61BEXT	AVD	KOYAMBEDU MARKET	POOCHI ATHIPET	1	1						
	61CCUT	AVD	AVADI	MUTHAPUDUPET	4	4						
300	61D	AYD	1 BROADWAY	KADAVUR	1	1						
	61DCUT	AVD	AVADI	REDHILLS	2	2						
	61DEXT	AVD	BROADWAY	KILKONDIAYUR	1	1						
301	61E	AYD	1 BROADWAY	KILKONDIAYUR	1	1						
	61ECUT	AVD	KOYAMBEDU MARKET	KILKONDIAYUR	2	2						

SL. NO	ROUTE NO.	DEPOT	ORIGIN	DESTINATION	TOT. SER.	O R D	L S S	P P	E X P L	D E M I	C I R	G S
302	62	MVD	1 REDHILLS	POONAMALLEE	4		2		2			
	62	PMD			8		5		3			
303	62A	AMD	1 REDHILLS	AMBATTUR ESTATE	4	4						
304	62B	AMD	1 AMBATTUR ESTATE	PADIYANALLUR	1		1					
305	62D	AMD	1 PUZHAI	KOYAMBEDU MARKET	1	1						
306	62E	AMD	1 MADHANKUPPAM	KOYAMBEDU MARKET	1	1						
307	64A	VYD	1 BROADWAY	KANNADASAN NAGAR	2	2						
308	64B	MVD	1 BROADWAY	MINJUR N.T.	5	1	4					
	64BCUT	MVD	PERAMBUR	MINJUR N.T.	4	4						
309	64C	MVD	1 BROADWAY	MANALI	8	8						
310	64D	MVD	1 BROADWAY	KOSAPPUR (SPIC)	1	1						
311	65A	PMD	1 SAIDAPET	MUTHAPUDUPET	1		1					
312	65B	PMD	1 POONAMALLEE	AMBATTUR ESTATE	8		8					
	65B	AMD			5		5					
	65B	AVD			3		3					
313	65C	AMD	1 AMBATTUR ESTATE	PAKKAM	5	5						
	65CCUT	AVD	AVADI	PAKKAM VILLAGE	1	1						

SL. NO	ROUTE NO.	DEPOT		ORIGIN	DESTINATION	TOT. SER.	O R D	L S S	P P	E X P	D E P L	M I R	C G S
314	66	TBD	1	TAMBARAM	POONAMALLEE	4	4						
	66	PMD				6	6						
	66	CPD				2	2						
315	PP66	TBD	1	VANDALLOOR ZOO	POONAMALLEE	6			6				
	PP66	PMD				6			6				
316	70	TBD	1	AVADI	TAMBARAM B.S.	12		8		4			
	70	AVD				16		8		8			
	70C	TBD		KOYAMBEDU MARKET	TAMBARAM B.S.	7	7						
	70C	KND				4	4						
	S70	AVD		AVADI	SALIGRAMAM	1	1						
317	70G	AYD	1	AYANAVARAM B.S.	TAMBARAM B.S.	4		4					
318	A70	KND	1	AVADI	PALLAVARAM	2		2					
	A70	ALD				3		3					
319	B70	KND	1	PATTABIRAM	GUINDY T.V.K.ESTATE	7		7					
	B70	AVD				5		5					
	B70	AMD				1		1					
	B70EXN	AVD		PAKKAM	GUINDY T.V.K.ESTATE	1		1					
320	C70	ALD	1	REDHILLS	GUINDY T.V.K.ESTATE	13		13					
	C70	AND				1		1					
	C70EXT	AND		TEACHER'S COLONY	GUINDY T.V.K.ESTATE	1		1					

SL. NO	ROUTE NO.	DEPOT	ORIGIN	DESTINATION	TOT. SER.	O R D	L S S	P P	E X P L	D E M I	C I R	G S
321	D70	AMD	1 AMBATTUR ESTATE	VELACHERY	11	9	2					
	D70	ALD			11	9	2					
	D70	TVM			2		2					
	D70CU	ALD	THIRUVERKKADU	VELACHERY	1	1						
	D70/18	ALD	KOYAMBEDU MARKET(D70/18P)	VELACHERY HOSPITAL	1	1						
322	E70	AMD	1 THIRUNINRAVOOR P.U.O.	C.M.B.T.	3	3						
323	F70	KND	1 PATTABIRAM	GUINDY T.V.K.ESTATE	2	2						
324	G70	VPD	1 VADAPALANI	TAMBARAM B.S.	8	8						
	G70EXT	VPD	VADAPALANI	VANDALLOOR ZOO	1	1						
	G70EX	VPD	SALIGRAMAM	VANDALLOOR ZOO	1	1						
	K70EXT	AMD	ELANGONAGAR OFFICER'S COL	TAMBARAM B.S.	1			1				
325	L70	AMD	1 AMBATTUR O.T.	TAMBARAM B.S.	1	1						
326	T70	ADY	1 C.M.B.T.	KANNAGI NAGAR S.C.BOARD	1	1						
	71EXT	AMD	BROADWAY	AYAPPAKKAM	1	1						
327	71C	AYD	1 BROADWAY	SIDCO NAGAR	1	1						
328	71D	AMD	1 BROADWAY	PUDUR	4	4						

SL. NO	ROUTE NO.	DEPOT	ORIGIN	DESTINATION	TOT. SER.	O R D	L S S	P P	E X P	D E P L	C M I	G R S
329	71E	AMD	1 BROADWAY	THIRUNINDRAVOOR	15	15						
	71E	AVD			1				1			
	71EEXT	AVD	BROADWAY	PAKKAM	1	1						
330	71F	AMD	1 BROADWAY	SENTHILNAGAR	1	1						
331	71H	AVD	1 BROADWAY	KAMARAJ NAGAR	2	2						
	71H	AMD			1	1						
332	80	TBD	1 TAMBARAM	PADAPPAL/ATHANOR VIL.	2	2						
333	80A	TBD	1 TAMBARAM	NADUVEERAPATTU	1	1						
334	88CUT	VPD	1 CMBT	KUNDRATHUR B.S.	2	2						
335	88A	VPD	1 BROADWAY	NANDAMBAKKAM	1	1						
	88A	CD			1	1						
336	88C	IYP	1 BROADWAY	KUNDRATHUR B.S.	1	1						
	88CET	IYP	PORUR	NANDAMBAKKAM VILLAGE	1	1						
	88CCUT	IYP	BROADWAY	THANDALAM VILLAGE	1	1						
	88CEXT	IYP	BROADWAY	KUNDRATHUR MURUGAN TEMPLE	4	4						
337	88D	KND	1 SAIDAPET WEST	KUNDRATHUR B.S.	1	1						
338	88E	IYP	1 IYAPPANTHANGAL	SOMANGALAM	1	1						

SL. NO	ROUTE NO.	DEPOT	ORIGIN	DESTINATION	TOT. SER.	O R D	L S S	P P	E X P	D E P L	M I R	C G S
339	88G	KND	1 SAIDAPET WEST	KUNDRATHUR B.S.	1		1					
340	88K	IYP	1 BROADWAY	KUNDRATHUR B.S.	7		7					
341	88L	IYP	1 T.NAGAR B.S.	PERIYA COLONY	1		1					
342	101	PMD	1 THIRUVOTRIYUR	POONAMALLEE	2		1		1			
	101	TVT			11		5		6			
343	103	AYD	1 VALLALAR NAGAR	AVADI	4		4					
344	114	AND	1 REDHILLS	TAMBARAM B.S.	7	2	3		2			
	114	TBD			7	3			4			
	114	KND			3		1		2			
	114CUT	AND	REDHILLS	KOYAMBEDU MARKET	4		4					
345	114C	MVD	1 ALAMATHI	KOYAMBEDU MARKET	1		1					
346	114S	MVD	1 SEEMAVARAM	KOYAMBEDU MARKET	1	1						
347	116	VYD	1 BROADWAY	KANNADASAN NAGAR	7		7					
348	120	AVD	1 BROADWAY	AVADI	5		5					
	120	AYD			8		3		5			
	120CUT	AVD	BROADWAY	THIRUMULLAIVOYAL COLONY	1		1					
349	121A	MVD	1 MANALI	KOYAMBEDU MARKET	1	1						

SL. NO	ROUTE NO.	DEPOT		ORIGIN	DESTINATION	TOT. SER.	O R D	L S S	P P	E X P	D E P L	M I R	C G S
350	121B	MVD	1	MINJUR N.T.	KOYAMBEDU MARKET	2	2						
351	121C	END	1	ENNORE	C.M.B.T.	1	1						
352	121D	TD2	1	C.M.B.T.	MANALI NEWTOWN	2	2						
353	138	END	1	ENNORE	KODUNGAIYUR MUTHAMIZHNAGR	1	1						
354	138A	TVT	1	THIRUVOTRIYUR	PERIYAR NAGAR	6			6				
	142EXT	PBD		BROADWAY	VINAYAGAPURAM	2		2					
355	142B	PBD	1	BROADWAY	PERAVALLUR KUMARN NAGAR	2	2						
	142B	AYD				1	1						
356	147	AMD	1	THIRUVANMIYUR	AMBATTUR ESTATE	10	10						
	147	TVM				2	2						
357	148	BBD	1	ORAGADAM	VALLALAR NAGAR	1	1						
358	150	AVD	1	BROADWAY	AVADI	1	1						
359	153	AND	1	BROADWAY	THIRUMAZHISAI	6	6						
	153	PMD				5	5						
360	154	TND	1	T.NAGAR B.S.	PATTU MANGADU	1	1						
361	154A	TND	1	T.NAGAR B.S.	MANGADU	1	1						

SL. NO	ROUTE NO.	DEPOT		ORIGIN	DESTINATION	TOT. SER.	O R D	L S S	P P	E X P L	D E M I	C I R	G S
362	159	TVT	1	THIRUVOTRIYUR	THIRUVERKKADU	9	8			1			
363	159A	TVT	1	THIRUVOTRIYUR	C.M.B.T.	4	4						
	159A	VPD				3	3						
	159A	VYD				3	3						
	159A	BBD				1	1						
	159A	TD2				1	1						
364	159B	TDI	1	TOLLGATE	C.M.B.T.	6	6						
365	159C	TVT	1	THIRUVOTTIYUR	KOYAMBEDU MARKET	2	2						
	159C	VYD				1	1						
	159D	TD1		I.O.C.	C.M.B.T.	1	1						
366	159D	TD2	1			1	1						
367	159E	TVT	1	ENNORE	C.M.B.T.	1	1						
	159E	END				1	1						
	159E	BBD				4	4						
368	164	MVD	1	BROADWAY	M.M.C.	5	5						
369	170	TBD	1	THIRUVERKKADU	TAMBARAM B.S.	2	2						
	170	KND				8	6		2				
370	170A	TBD	1	MADHAVARAM VILLAGE	TAMBARAM B.S.	3	1		2				
	170A	MVD				4			4				
371	170B	AND	1	THIRU-VI-KA NAGAR	TAMBARAM B.S.	1			1				

SL. NO	ROUTE NO.	DEPOT	ORIGIN	DESTINATION	TOT. SER.	O R D	L S S	P P	E X P L	D E M I	C I R	G S
	170BCU	PBD	PERAVALLUR KUMARAN NAGAR	TAMBARAM B.S.	1				1			
372	170C	MVD	1 THIRU-VI-KA NAGAR	GUINDY T.V.K.ESTATE	4				4			
	170C	PBD			4	4						
	170CEX	MVD	MANALI	GUINDY T.V.K.ESTATE	2		2					
373	170DEX	VYD	1 KANNADASAN NAGAR	GUINDY T.V.K.ESTATE	2				2			
374	170E	VYD	1 I.O.C.	GUINDY I.E.	1		1					
375	170G	AND	1 PERIYAR NAGAR	TAMBARAM	2				2			
376	170K	PBD	1 PERAVALLUR KUMARAN NAGAR	VELACHERY	2		2					
377	170T	VYD	1 K.KANNADASAN NAGAR	TAMBARAM	4				4			
	237	VPD	VADAPALANI	ENNORE	1		1					
378	242	PBD	1 BROADWAY	REDHILLS	14			8	6			
379	248	AYD	1 VALLALAR NAGAR	PUDUR	11		11					
	248	VYD			5		3	2				
380	254	IYP	1 BROADWAY	IYAPPANTHANGAL	6		4	2				
381	C5	SPD	1 SAIDAPET	SAIDAPET	1							1
382	M1	TVM	1 KILKATTALAI	THIRUVANMIYUR	4					4		

SL. NO	ROUTE NO.	DEPOT		ORIGIN	DESTINATION	TOT. SER.	O R D	L S S	P P	E X P	D E P L	M I R	C G S
383	M2	SPD	1	SAIDAPET	MEDAVAKKAM ROAD JN.	2						2	
	M2	ALD				2						2	
384	M5A	ADY	1	ADAYAR B.S.	KELAMBAKKAM	8						8	
	M5A	TVM				2						2	
385	M5G	TVM	1	T.NAGAR B.S.	KANNAGI NAGAR	2						2	
	M7	TND		T.NAGAR	THIRUVANMIYUR	2						2	
386	M7	TVM	1			3						3	
	M7	SPD				3						3	
387	M11	CPD	1	TAMBARAM EAST	MADIPAKKAM RD. JN.	2						2	
388	M12B	VPD	1	SALIGRAMAM	MYLAPORE	2						2	
389	M14	SPD	1	N.G.O.COLONY	MEDAVAKKAM ROAD JN.	4						4	
390	M15	ADY	1	MYLAPORE	MEDAVAKKAM	2						2	
	M15	MND				4						4	
391	M18	TBD	1	TAMBARAM B.S.	GUDUVANCHERY	4						4	
	M18	ALD				2						2	
392	M18C	ALD	1	T.NAGAR B.S.	KILKATTALAI	3						3	
	M18C	SPD				1						1	
393	M19	ADY	1	GUINDY I.E.	INJAMBAKKAM (V.G.P.)	4						4	

SL. NO	ROUTE NO.	DEPOT	ORIGIN	DESTINATION	TOT. SER.	O R D	L S S	P P	E X P	D E P L	M I R	C G S
394	M19B	ADY	1 T.NAGAR B.S.	KANNAGI NAGAR S.C.BOARD	2						2	
395	M21	ALD	1 VELACHERY	TAMBARAM EAST	2						2	
	M21	SPD			2						2	
	M21	TBD			2						2	
	M21	CPD			2						2	
396	M21G	MND	1 HIGHCOURT	GUINDY I.E.	4						4	
	M27	VPD	T.NAGAR B.S.	C.M.B.T.	4						4	
	M27C	VPD	T.NAGAR B.S.	VANAGARAM METTUKUPPAM	1						1	
397	M27A	AMD	1 AMBATTUR O.T.	L.I.C.	4						4	
398	M27L	AMD	1 MOGAPPAIR WEST	STERLING ROAD	2						2	
	M27L	AND			5						5	
399	M27H	AMD	1 AMBATTUR O.T.	L.I.C.	3						3	
400	M27N	AND	1 ANNA SQUARE	MOGAPPAIR EAST	1						1	
401	M45	ALD	1 T.NAGAR B.S.	KILKATTALAI	2						2	
	M45	SPD			1						1	
402	M47	AND	1 T.NAGAR	MUGAPPAIR WEST	3						3	
403	M47A	AND	1 MUGAPPAIR EAST	T.NAGAR B.S.	3						3	
404	M47D	TND	1 T.NAGAR B.S.	PALAVAKKAM VISRANTHI	2						2	

SL. NO	ROUTE NO.	DEPOT		ORIGIN	DESTINATION	TOT. SER.	O R D	L S S	P P	E X P	D E P L	M I R	C G S
405	M49	ALD	1	THIRUNAVMIYUR	RAMACHANDRA MEDICAL COLLG	2						2	
	M49	TVM				3						3	
	M49	KND				5						5	
406	M51	ALD	1	T.NAGAR B.S.	SHOLINGANALLUR	4						4	
407	M52	CPD	1	PALLAVARAM	POZHICALUR	2						2	
	M52EXT	CPD		POZHICALUR	GUDUVANCHERY	1						1	
408	M54	PMD	1	T.NAGAR	POONAMALLEE	4						4	
	M54	IYP				1						1	
	M54	SPD				3						3	
	M54	ALD				3						3	
409	M54A	PMD	1	POONAMALLEE	THIRUNINDRAVOOR	2						2	
410	M55	TBD	1	TAMBARAM	MANNIVAKKAM EXTN.	2						2	
411	M55A	CPD	1	PALLAVARAM	PAZHANTHANDALAM	4						4	
412	M62	AVD	1	REDHILLS	AVADI	2						2	
413	M66	ALD	1	POONAMALLEE	PALLAVARAM	2						2	
	M66	CPD				1						1	
414	M70	KND	1	C.M.B.T.	THIRUVANMIYUR	12						12	
415	M70A	AVD	1	AVADI	C.M.B.T.	4						4	
416	M70A	VPD	1			2						2	
417	M88	IYP	1	VADAPALANI	KUNDRATHUR B.S.	8						8	
418	M88C	IYP	1	SAIDAPET	KUNRATHUR	3						3	

SL. NO	ROUTE NO.	DEPOT		ORIGIN	DESTINATION	TOT. SER.	ORD	LSS	PP	EXP	DEL	MIR	CGS
	M88C	ALD				2						2	
419	M89	IYP	1	KUNDRATHUR	SOMANGALAM	2						2	
420	M116	VYD	1	BROADWAY	MUTHAMIZH NAGAR	3						3	
421	M147	AND	1	T.NAGAR	MUGAPAIR OFFICER'S COLONY	2						2	
422	M253	PMD	1	AMINJIKARAI	VELLAVEDU	6						6	
	M253	AND				3						3	
	M253	KND				2						2	

TOT.SER – TOTAL SERVICE

ORD-ORDINARY SERVICE

LSS-LIMITED STOP SERVICE

PP-POINT-TO-POINT SERVICE

EXP-EXPRESS SERVICE

DEL-DELUX COACH

M-M SERVICE

CIR-CIRCULAR SERVICE

GS-GENERAL SHIFT

Details of Night Services

S.No.	Route No.	From	To	No.of.Services
1	1B	Thiruvottiyur	Tambaram B.S.	2
2	1	Thiruvottiyur	Thiruvanmiyur	1
3	5A	T.Nagar	Tambaram East	1
4	5E	Thiruvanmiyur	Koyambedu Market	1
5	12B	Vadapalani B.S.	Foreshore Estate	1
7	15BExtn.	Ennore	C.M.B.T.	1
8	15FC	Broadway	Koyambedu Market	2
9	15F	Broadway	C.M.B.T.	2
10	17A	Broadway	Koyambedu Market	1
11	17M	Highcourt	Iyyappanthangal	1
12	18A	Highcourt	Tambaram B.S.	4
13	G18	T.Nagar	Guduvanchery	1
14	19S	Highcourt	Thiruvanmiyur	1
15	21G	Broadway	Tambaram	1
16	25G	Poonamallee	Anna Square	1
17	27B	C.M.B.T.	Triplicane	1
18	46G	M.K.B.Nagar East	C.M.B.T.	1
19	46	Thiru-Vi-Ka-Nagar	C.M.B.T.	2
20	48C	C.M.B.T.	Vallalar Nagar	1
21	T51	Tambaram East	Thiruvanmiyur	2
22	M54H	Saidapet	Poonamallee	1
23	62cut	Avadi	Redhills (via) AMBT	1
24	70	Avadi	Tambaram B.S.	5
25	D70	Ambattur Estate	Velachery	2
26	M70	C.M.B.T.	Thiruvanmiyur	1
27	M71E	Ambattur Estate	Thirunindravoor	1
28	101	Thiruvottiyur	Poonamallee	3
29	114	Redhills	Tambaram B.S.	1
30	120	Broadway	Avadi	1
31	159ACut	C.M.B.T.	Manali	1
32	159AExtn.	Ennore	C.M.B.T.	1
33	159A	Thiruvottiyur	C.M.B.T.	1
34	242	Broadway	Redhills	1
		Total		48

**ISSUE OF FREE PASSES TO PHYSICALLY HANDICAPPED,
MENTALLY RETARDED, BLIND AND FREEDOM FIGHTERS.**

As per the Social Welfare Department G.O free bus passes are issued to the Handicapped persons, Blind persons and Mentally Retarded persons.

A. PHYSICALLY HANDICAPPED:

1. Free bus passes are issued to the handicapped persons whose physical impairment is 40% and above, based on the Identity card and recommendation of the concerned Social Welfare Department District Rehabilitation Officer.
2. Physically Handicapped persons are being issued with free point to point bus passes on production of the required certificates to enable them to travel from place of residence to School / Hospital / Educational Institutions / Workspot and back.
3. For obtaining free bus pass the Annual Income should not exceed of Rs.12,000/-
4. Applicants who apply for the free bus pass concession shall produce two copies of stamp size photos along with their application. They should renew the point-to-point free pass card every month.
5. The Physically Handicapped students who are studying up to XII Std. in the Special schools for the physically handicapped which are recognized by the State Commissioner for the disabled are issued with 100% free travel bus passes through "On line" on par with the normal students.

B. MENTALLY RETARDED

1. Free bus passes are issued to the Mentally Retarded persons whose impairment is 40% and above based on the Identity card and recommendation of the concerned Social Welfare Department District Rehabilitation Officer.
2. Mentally Retarded persons are being issued with free point to point bus passes on production of the required certificate to enable them to travel from place of residence to Schools / Hospital / Educational Institutions / workspot and back.
3. The free bus pass concession also being issued to one attendant who accompany the Mentally Retarded persons.
4. Free bus passes are issued without any annual income limit to the Mentally Retarded persons.
5. Applicants who apply for the free bus pass concession must submit the application along with two copies of stamp size photos. They should renew the point-to-point free pass card every month.

6. The Mentally Retarded students who are studying up to XII Std in the Special schools for the Mentally Retarded Persons / physically handicapped which are recognized by the State Commissioner for the Disabled are issued with 100% free travel bus passes to the M.R student and to one attendant through "On line" on par with the normal students.

C. BLIND PERSONS:

1. Free bus passes are issued to the Blind persons based on the certificate of the Medical Officer, Identity Card and the Recommendation of the concerned Social Welfare Department District Rehabilitation Officer.
2. Free bus pass is issued to blind person to enable them to travel in all M.T.C. routes throughout the year. No income ceiling for the issue of free bus pass to blind persons.
3. If any blind person lost the bus pass issued, duplicate pass will be issued on production of a certificate from the Police Station concerned and on payment of Rs.10/-

D. FREE PASS TO FREEDOM FIGHTERS \ PARTICIPANTS OF LANGUAGE STIR AND THEIR LEGAL HEIRS

MTC issuing free travel bus passes to the Freedom Fighters and participants in the Language Stir and their legal heirs who are residing in the operational area of MTC. They are eligible, as per the G.O to travel in all STU buses throughout the State.

The Freedom Fighters\Participants of Language Stir may approach concerned PRO/Officer of State Transport Undertakings, with their original Pension order for receiving the application form. The applicant should submit the duly filled application form with the attestation of a Gazetted Officer on the photo affixed on the form along with two passport size photos and Xerox copy of the pension order.

Free pass will be issued after the scrutiny of the application form. They should renew their passes once in a year before May 31. At the time of renewal they should produce the original Pension Order for affixing the renewal seal.

If the above pass is lost, duplicate pass will be issued on production of a certificate from the Police Station concerned and on payment of Rs.30/- as penalty.

E. PUBLIC COMPLAINTS:

Commuters in Chennai City can make complaints against the Conductor, Drivers and Operation of bus services to the following address:

The Managing Director,
Metropolitan Transport Corporation (Chennai) Ltd,
Pallavan House, Chennai-600 002.

The General Manager (Operation)
Metropolitan Transport Corporation (Chennai) Ltd,
Pallavan House, Chennai-600 002.

Public Relations Officer,
Metropolitan Transport Corporation (Chennai) Ltd,
Pallavan House, Chennai-600 002.

Complaints and suggestions received from the Public regarding the Operation/Maintenance of bus services will be sent to concerned Officers and the same will be rectified at the earliest.

F. LOST PROPERTY ITEMS

If any lost property found in the bus by the Crew while on duty they shall handover the same to the Depot immediately on completion of their duty. The Branch Manager concerned shall hand over the same to the PRO Section immediately. Passengers who have lost their belongings during their travel in buses may approach PRO over phone or through letter with details. The loss will be enquired in details.

If the belongings are available in office the same will be intimated to the passengers. The affected person can get back the items after producing the proper identification of the lost articles and the journey ticket. On restoration of the articles a small amount is collected from the passenger as storage charges and 50% of the amount so collected will be paid to the Conductor who hand over the articles at the Office.

G. HIRING OF BUSES TO PRIVATE PARTIES:

- 1) Hire charges Rs.3,500/- per day (24 Hours) for minimum of 100 Kms per bus is being collected.
- 2) Beyond 100 Kms. Rs.15/-will be charged per Km. as Running charges
- 3) Reservation charges (Non refundable amount per day per bus) Rs.150/- shall be collected.
- 4) Refundable caution deposit 50% of the hire charges shall be collected. The shed-out and shed-in timings of bus at the Depot shall be taken as the period of hire.
- 5) The requisition letter to hire the bus is to be sent to PRO at least 3 working days before the date of hire along with the advance payment
- 6) Payment is to be made in advance through demand draft drawn in favour of the Metropolitan Transport Corporation Ltd, Chennai-2
- 7) Caution deposit will be refunded after completion of the journey and after obtaining the details of the operation from the Depot.
- 8) To get the refund of the Caution Deposit, the caution deposit repayment voucher is to be duly filled and submitted.
- 9) For cancelling the hiring of bus it should be intimated 24 hours in advance, if the cancellation is not intimated before 24 hours the caution deposit and the reservation charges shall be fore-feited.
- 10) The buses hired will have to be utilized with in the operational area of the Metropolitan Transport Corporation only.
- 11) The party should pay the cost of damages if any occurs during the period of hire with or without the knowledge

H. ISSUE OF FREE BUS PASSES TO STUDENTS STUDYING UP TO XII STD.

- 1) MTC issue free bus passes to the students studying from I to XII Standard as per the G.O.Ms.No.135, Transport (B1) Department, dated 20-05-2004.
- 2) Schools have to collect a sum of Rs. 15/- per student and remit to the M.T.C., towards taking photo and lamination charges. An authorization slip will be given to them by MTC indicating the date for taking photo and the number of students to be issued with passes. The required number of applications will also be given to the schools. The amount collected as stated above may be sent to MTC by means of demand draft drawn on 'Metropolitan Transport Corporation (Chennai) Ltd '. The applications may be collected from the Asst. Manager (EDP) MTC Head Office, at Pallavan Salai, Chennai 600 002. The school authority should hand over the filled up applications duly signed, to the photo taking agency on the prescribed date. Photo will be taken and the Passes will be issued to the students then and there.
- 3) The details of passes taken and issued to the students will be recorded in authorization slip by the photo taking agency. A copy of the authorization slip will be given to MTC and other copy to the schools, after getting acknowledgement from the Institutions.
- 4) The Educational officers will explain the head of the Institutions under their jurisdiction about the method of getting free passes. The Educational Officers will also request the Heads of the Education Institutions to provide space and other required infrastructure facilities for operating the computer system and to depute one staff to identify the students and to assist the computer team for carrying out their work.
- 5) The Educational officers will send the list of Government approved schools functioning under their jurisdiction which are eligible for the issue of free passes to students.

ACCIDENT BRANCH DETAILS

Metropolitan Transport Corporation Limited operates its Buses in the jurisdiction of Greater Chennai. This Corporation operates its buses round the clock and hence the Accident Branch at Head Quarters (Pallavan Illam) functions round the clock in three shifts.

During the operation of buses, road accidents occur due to various reasons, and consequently passengers, public and other road users are affected by the Accidents.

On receipt of information of the accidents from the crew, police, public and other sources, the Accident Branch Investigators at the Accident Branch rush to the accident spots and investigate the accidents. The Investigators and other officials of accident branch with the cooperation of Police Department prepare the Detailed Accident Report (DAR), fixing the responsibility for the accident. After the approval of DAR, the copies of the same shall be forwarded to the Legal Section (DP and MACT Claims) of MTC Ltd., to follow up further corrective actions.

The management of MTC has written in the bus the following phone Nos. to contact the management of MTC in case of emergency and Road Accidents.

- 1) ACCIDENT BRANCH a) 2536 6063 Ext. 256
 b) 2345 5855

- 2) WIRELESS CONTROL a) 2536 6063 Ext. 239
 b) 2345 5858
 c) 2345 5859

The above Telephone Nos. have been written and exhibited inside MTC buses, Ambulance, T.K.Bunks and Bus Stands. In case of emergency Accidents and Complaints the common public can use these numbers to ring up and lodge their complaints.

In addition to the above MTC have written some advisory slogans inside and outside the buses and bus stand etc. to reduce the occurrence of accidents.

An Ambulance and two Cranes have been received from the Transport Commissioner from the Road Safety fund for the emergency uses in the operation of Buses in Chennai City. In the above vehicles also phone nos. have been written for information of the common public.

We can divulge the above information on receipt of proper application from the commuters and common public.

R.BALASUBRAMANIAN
MANAGING DIRECTOR